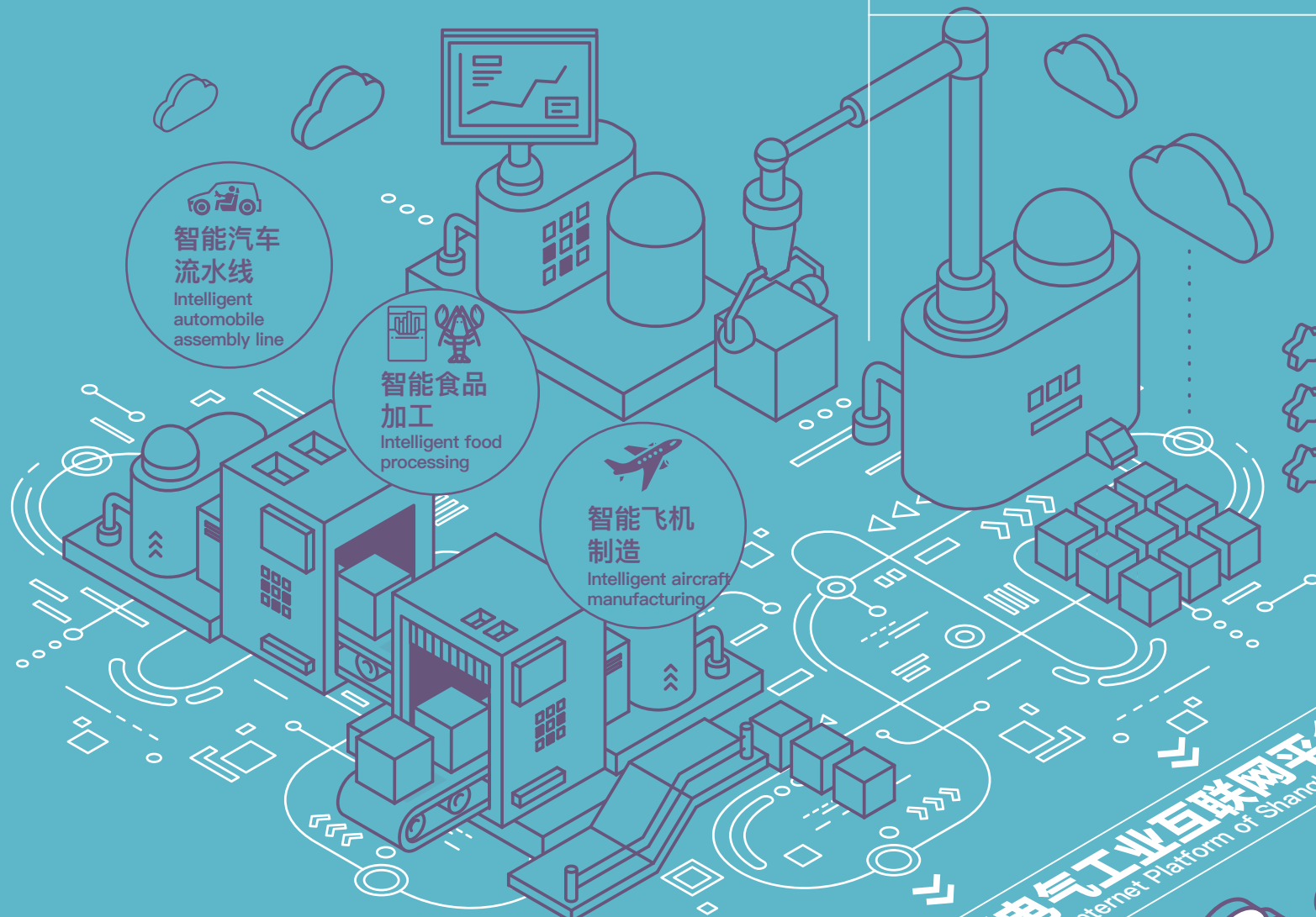


智能制造解决方案

INTELLIGENT MANUFACTURING SOLUTIONS



在智能制造领域，上海电气拥有工业机器人、3D打印机、铺丝机、铺带机、自动化控制、大中型电机、变频器、机床等高端装备，还拥有仪器仪表、紧固件、工具刀具、叶片、轴承、微型电机等工业基础件。依靠上海电气ERP实施能力和工业互联网能力，上海电气曾经为飞机制造流水线、汽车制造生产线、电池装备线、压缩机、电机、轴承、烟草和食品加工业提供了智能制造解决方案，既能够解决大件小批量，又能够为小件大批量提供智能制造解决方案，为各地制造业产业升级提供优化的系统解决方案。

In the intelligent manufacturing field, Shanghai Electric has industrial robots, 3D printers, fiber placement, tape layer, automatic control, large and medium-sized motors, frequency converters, machine tools and other high-end equipment, as well as instruments, fasteners, tools and cutters, blades, bearings, micro motors and other industrial basic parts. Based on its ERP implementation and industrial interconnection ability, Shanghai Electric has provided intelligent manufacturing solutions for aircraft assembly line, automobile production line, cell assembly line, compressor, motor, bearing, tobacco and food processing industry. It can provide the intelligent manufacturing solutions for not only the large parts in small batches, but also small parts in large batches, and provide the optimized system solutions for the manufacturing industry upgrading in all regions.

